



K & R **VALVE AND FITTING WHOLESALE, INC.**

Supporting Multiple Industries & Manufacturers.
Serving California and Nevada.

Authorized Walworth Valve Representative



Supporting multiple industries and manufacturers.
Working together with supply chain, design and manufacturing to
obtain best possible solutions for the the industry and environment.



K&R Proudly Represents the following Manufactures & Products:

K&R supplies a wide variety of products to meet your industry needs, and specifications when you need them.

K&R is your official Walworth representative for all your valve needs.

K&R has the valves you are looking for, in various configurations, metallurgy and design standards your application requires. No matter the project, or maintenance, or how harsh the service conditions may be, Walworth has a valve suitable to meet all your applications, conditions, and strict demands. Walworth valves all come with all the required certifications, testing reports, and the guarantee you the dependability you have grown to trust from Walworth valve products.

Valve Types:

- Trunnion Mounted Ball Valves**
- Floating Ball Valves**
- Safety Relief Valves**
- Plug Valves**
- Dual Plate Waffer Check Valves**
- Through Conduit Gate Valves**
- Pressure Seal**
- Industrial Bronze - Gate, Globe & Check Valves**
- Cast Iron - Gate, Globe & Check Valves**
- Cast Steel - Gate, Globe & Check Valves (API600)**
- Forged Steel - Gate, Globe & Check Valves (API602)**
- Cast Stainless Steel - Gate, Globe & Check Valves (API603)**

Configurations:

- Sizes:** 1/4" - 60"
- Pressure:** 125-2500
- Body Material:** Cast Steel, Forged Steel, Stainless Steel, Specialty Alloys, & More
- End Connections:** RF, RTJ, SW, NPT, BW, FF & More
- API Trim:** 1, 5, 8, 9, 11, 12, 13, 14, 16, & Many More...
- Seats:** Soft & Hard
- Operator:** Lever, Handwheel, Gear op., Various Actuation, Chain op., & More...
- Custom Applications:** Pup Extension, Stem Extensions, Relief Systems, & More...

Visit us on: www.krvfw.com for more in depth configuration details.



ADVANCED THERMAL SYSTEMS, INC

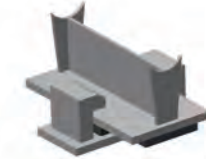
K&R is your supplier for ATS, the world leader in the design and manufacturing of packed slip type expansion joints and ball joints; as well as low friction pipe supports and guides.



Packing Cylinders



Thermal Pack Expansion Joints



Low Friction Guides & Supports



Thermal Pak Flexible Ball Joints



K&R offers a large variety of SBC engineered products for the oilfield industry ranging from wellheads, pipe repair clamps, jack type boxes, rubber products, polished rod clamps, pumping and flow tees, and much more.



Polished Rod Clamps



Stuffing Boxes



Pumping Flow Tees Red



Cone Packing



Crown Rings



Crown Polishing Rings
Rubber Gold Flake



Rod Rotators



K&R offers the quality products from Iron Mule Products ranging from all you swages, changeover nipples, couplings, plugs, O Ring hammer unions, stuffing boxes and more.



Wellheads Mandrel & Slips



Swages



Stuffing Boxes



Oil Country Changeover Nipples



Aluminum Bronze & Stainless Steel "O-Ring" Hammer Unions



Certifications:

- API6D**
- API600**
- API602**
- API6A**
- API594**
- CE CERTIFICATIONS**
- SIL CERTIFICATES**
- ISO 9001**
- API Q1-1479**
- CFE Reliable Supplier**



Compact Valve Specialists

Valve Types:

- BALL VALVES**
- CHECK VALVES**
- PIGGING VALVES**
- THROTTLE VALVES**
- METAL SEATED VALVES**
- FLOW LINE COMPONENTS**

- Sizes:** 2" - 12"
- Pressure:** CL:600, 900, 1500, 2500; API: 2000, 3000, 5000, 10,000, 15,000
- Body Material:** Carbon Steel, Stainless Steel & Alloy Steel
- Seat Rings:** Acetyl Copolymer, Teflon, Peek & More...
- End Connections:** BW, RF, NPT, SW, Blind Flange, & More...
- Operator:** Lever, Gear op., Bare Stem, Actuator & More...

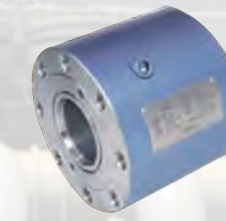
K&R is your ACECO supplier who offers a broad line of space saving valves that combine high quality materials and workmanship. All ACECO valves are developed to provide maximum durability and service life. Aceco valves weld directly into the line with no other fittings required.



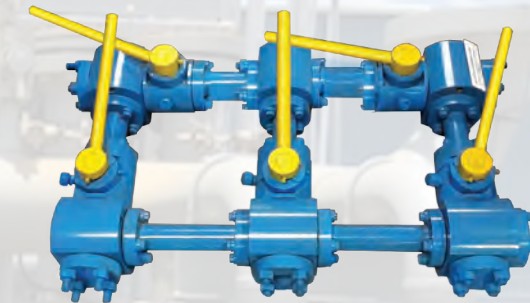
Subsea Valves



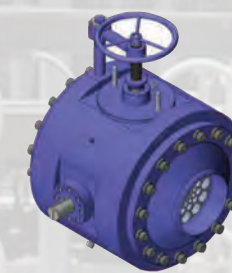
Trunnion Mounted Ball Valve



Model CV Check Valve



Manifold Systems



Pigging Valves



Floating Ball Valve



Authorized Walworth Valve Representative



Industries we Serve:

PETROCHEMICAL - If you're searching for valves that are operated manually with levers and gear operators or remotely with electric, pneumatic, electro-pneumatic, and electro-hydraulic powered actuators, we can assist you in making a selection that helps you to operate safely, efficiently, and reliably without excessive maintenance.

WATER MANAGEMENT - K&R offers valves that can be found in aqueducts, distribution branches, housing inlets, drinking water plants, water treatment plants, fire extinguishing networks and many other municipal water process centers.

GEOHERMAL - K&R's most popular product line is the API 600 steel gate valves with a Triballoy coating. This material configuration gives the products a superior service life than any others competitors products. K&R provides geothermal valves made from 316 stainless steel, carbon steel & alloys for any industrial application.

POWER GENERATION - If you are involved in the construction of a new power generation facility, or in the operation and maintenance of an existing power plant, K&R has the years of experience and the engineering and manufacturing resources to find the optimal solution for your specific valve applications.

PAPER & PULP - K&R has a successful history of providing high quality valve services and support to the paper and pulp processing industry with a full range of valve and actuation services to meet the specific needs and national board requirements for paper plants.

MINING - K&R is your Walworth representative for all your mining applications throughout the world where valve performance is required to handle difficult abrasive and slurry flow control applications.

CRYOGENIC - Designed to be used in very cold applications. They are thus most popularly used by companies that work with Liquefied Natural Gas (LNG) or Compressed Natural Gas (CNG). ... K&R has the cryogenic valves you are looking for, built to help transport and store such cryogenic gasses safely and efficiently.



About K&R Valve & Fitting Wholesale, Inc.

K&R Valve and Fitting began its business operation back in April 2016.

Russell Slover, President, has brought many years of industry, and application knowledge to K&R. Russell has been a key inovator and a trusted source for supply and solutions to the PVF business industry since his honorable discharge from the United States Army in June of 1976.

Russell's commitment to customers and product quality is widely recognized by his customers, through the industry leaders of manufactures he represents. Russell believes in the old adage that your company is only as stong as your manufactures, and suppliers, and works effortlessly to insure the goals and expectations for top quality are met by all parties.

K&R is your authorized representative for the following:



3363 PEGASUS DRIVE SUITE 401 BAKERSFIELD, CA 93308

OFFICE: 661-829-5015 MOBILE: 661-747-1510

WWW.KRVFW.COM
RUSSELL@KRVFW.COM



"A Veteran Owned Business"